

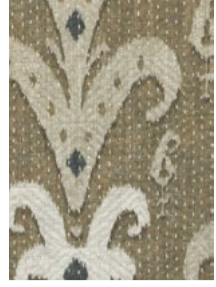
# Lewis & Wood

## KANTHAKAT

Fabric

Printed Width 136cm  
Vertical Repeat 67cm

Composition 51% Linen 42% Cotton 7% Nylon  
Rub Test 25,000



KANTHAKAT  
Black Bronze

Goes with



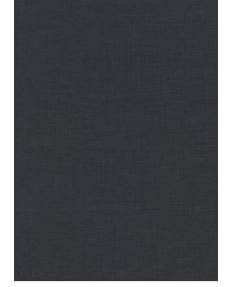
OAKSEY LINEN  
Buckskin



MONTELMAR  
Sand



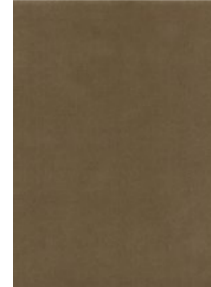
MONTELMAR  
Onyx



LIGHT LINEN  
Raven



HEAVY LINEN  
Sand



ROOKSMOOR  
Fawn



KANTHAKAT  
Cocoa Sky

Goes with



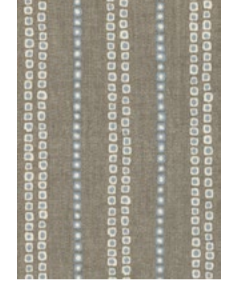
FRESCO LINEN  
Chambray



HEAVY LINEN  
Sand



LIGHT LINEN  
Casement



JAKARTA  
Cocoa Sky



KANTHAKAT  
Dark Ginger

Goes with



LIGHT LINEN  
Casement



KEMBLE LINEN  
Ochre



BIRDLIP TWILL  
Eggshell Reverse



MONTELMAR  
Bark



KEMBLE LINEN  
Parchment



KANTHAKAT  
Honey Dove

Goes with



FRESCO LINEN  
Chambray



LANGTOUN  
One Colourway



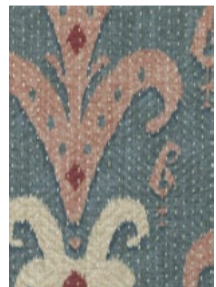
BIRDLIP TWILL  
Icing



MONTELMAR  
Onyx



STOCKHOLM  
Double Cream



KANTHAKAT  
Marmara Garnet

Goes with



OAKSEY LINEN  
Roan



OAKSEY LINEN  
Buckskin



OAKSEY LINEN  
Cranberry



OAKSEY LINEN  
Sea Glass



OAKSEY LINEN  
Marina



OAKSEY LINEN  
Almond



MONTELMAR  
Marmara



MONTELMAR  
Damson



KANTHAKAT  
Sage Rose

Goes with



OAKSEY LINEN  
Sea Holly



OAKSEY LINEN  
Roan



HEAVY LINEN  
Sand



KEMBLE LINEN  
Glacier



KEMBLE LINEN  
Sugar Almond



STOCKHOLM  
Sea Holly



STOCKHOLM  
Plaster



MONTELMAR  
Cadet



SELSLEY  
Heather



SELSLEY  
Mineral



ROOKSMOOR  
Hellebore



KANTHAKAT  
Smoky Buff

Goes with



KEMBLE LINEN  
Rock Dove



MONTELMAR  
Onyx



HEAVY LINEN  
Sand



JAKARTA  
Smoky Buff



STOCKHOLM  
North Light



METAXA  
Halva